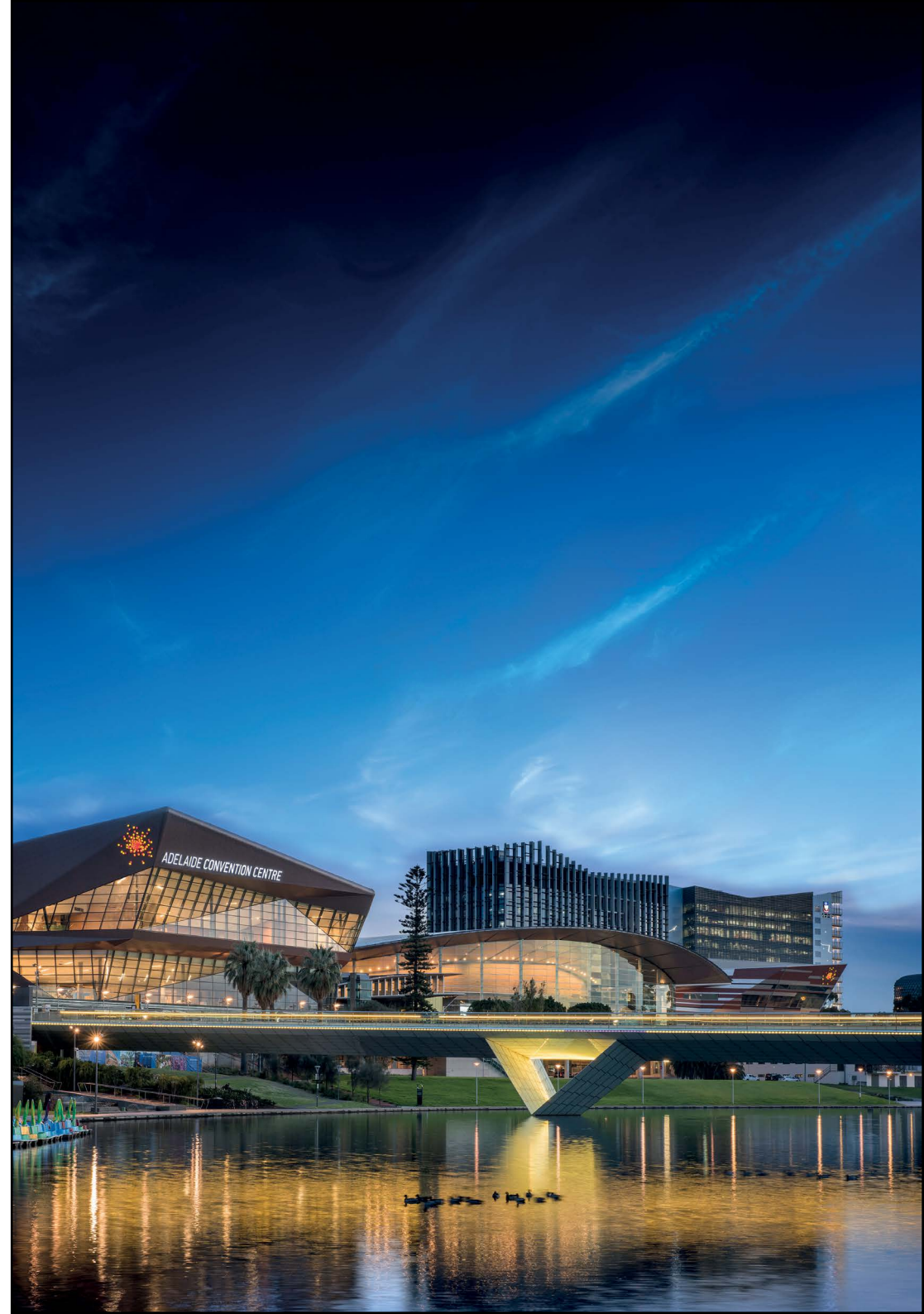




# **My guide to attending an event at Adelaide Convention Centre**

Social Story



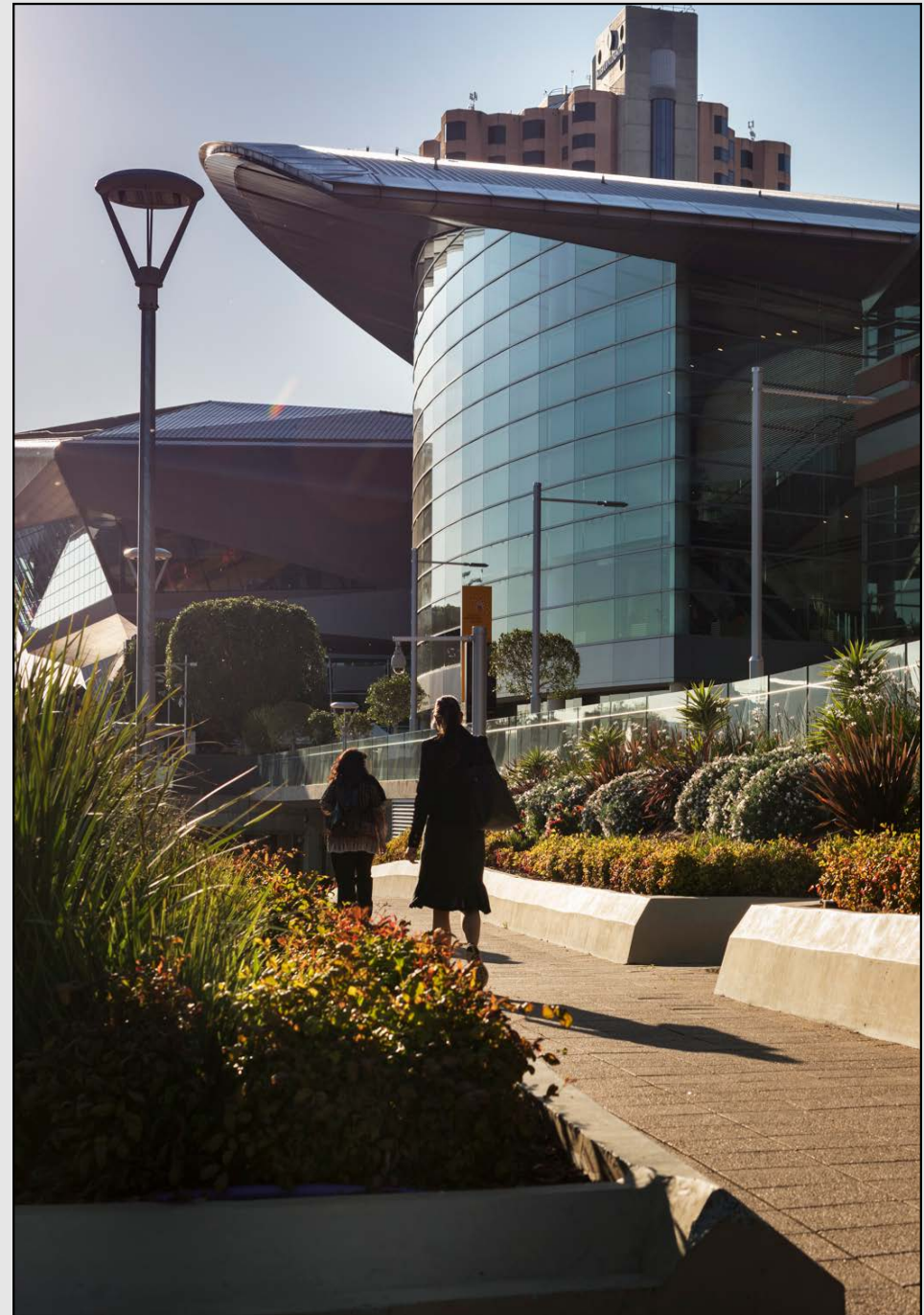
# Getting to Adelaide Convention Centre

I am attending an event at Adelaide Convention Centre.

Adelaide Convention Centre is located on North Terrace.

I can get to the Centre easily by public transport.

I can also choose to drive my car.





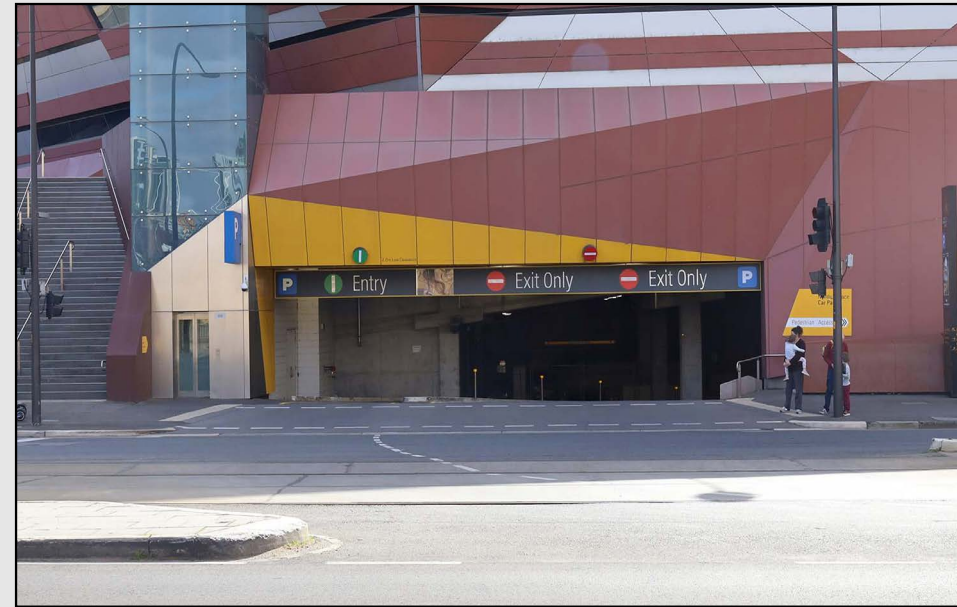
## Parking

There are two car parks I can use to park my car at Adelaide Convention Centre: **North Terrace Car Park** and **Riverbank Car Park**.

These car parks are undercover and accept payment by card only.

There are accessible parking spaces in both car parks if I need to use them.

via North Terrace: **North Terrace Car Park**



via Festival Drive: **Riverbank Car Park**



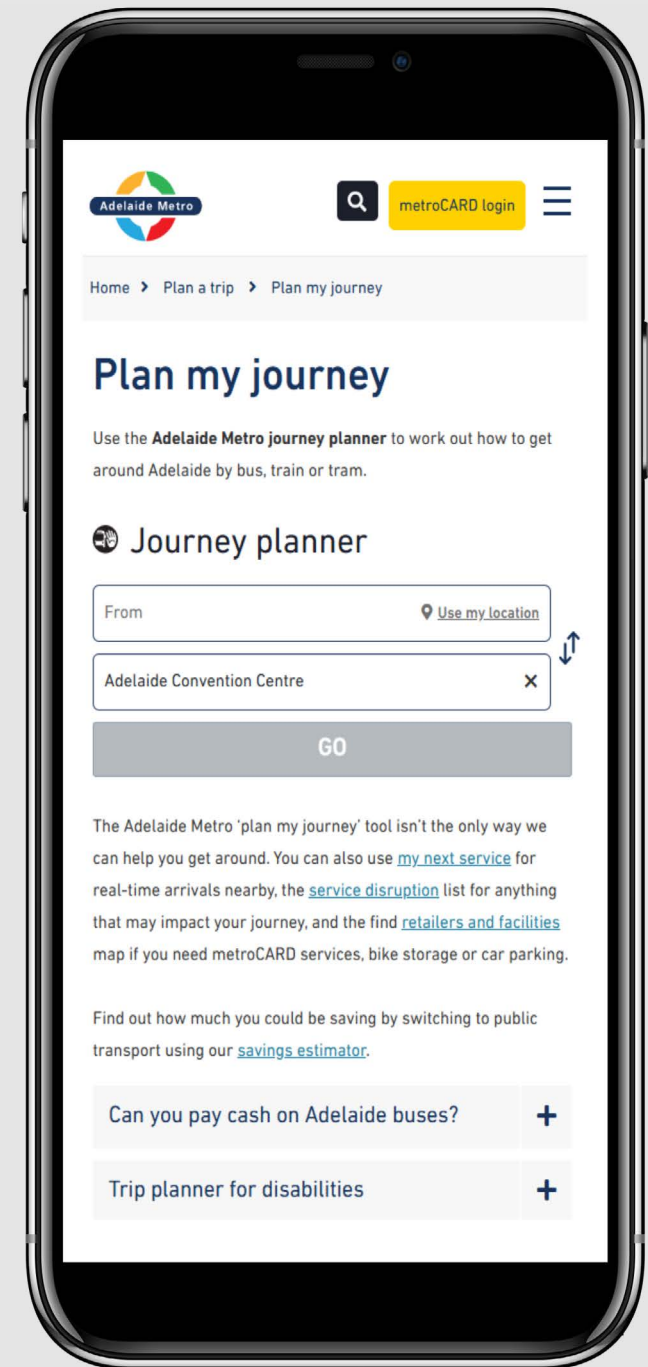
# Public Transport

If I am taking the **bus**, there are many bus stops located along North Terrace.

If I am taking the **train**, the Adelaide Railway Station is located 250 metres from the Centre.

If I am taking the **tram**, the Adelaide Railway Station Tram Stop is located 250 metres from the Centre.

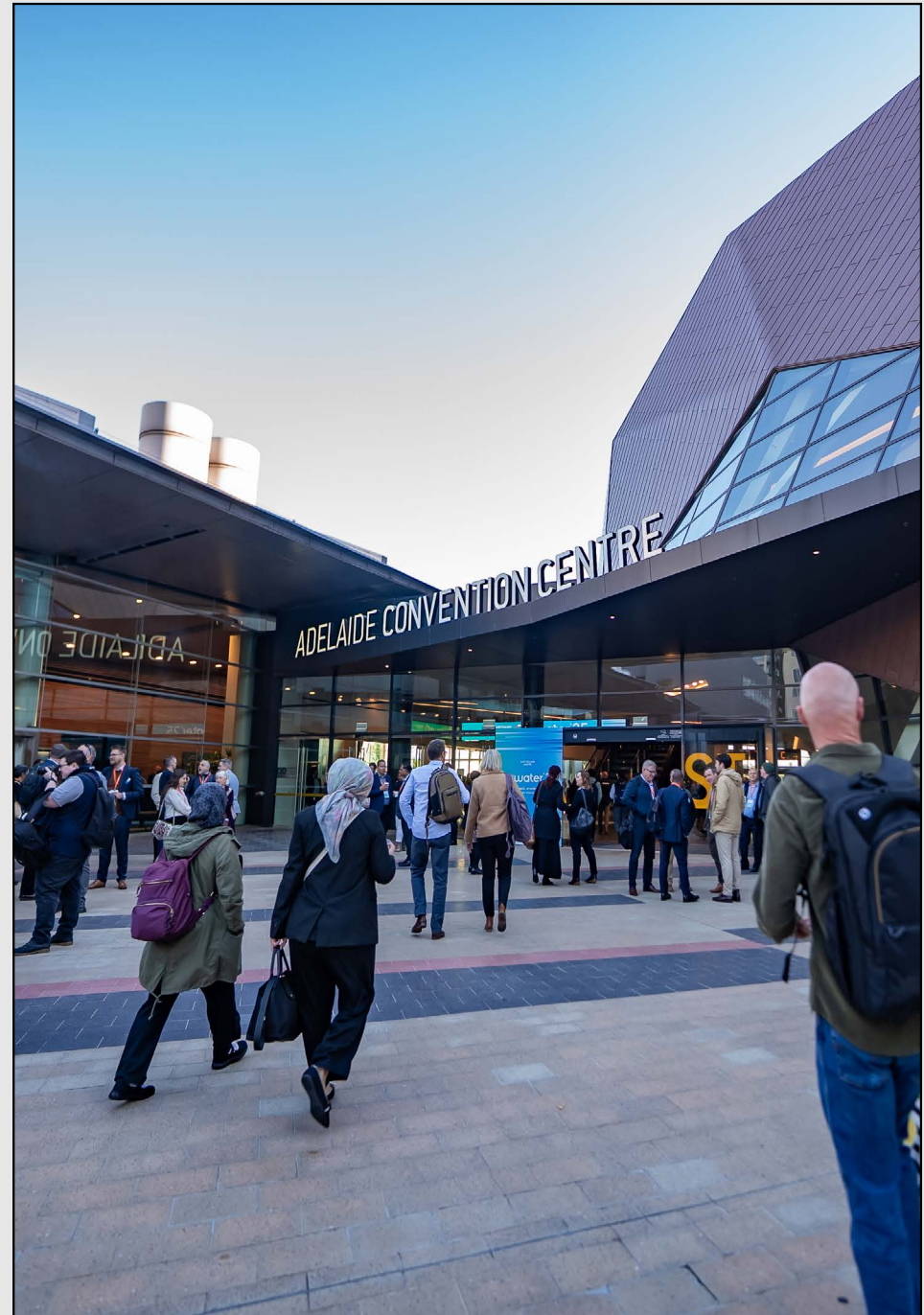
I can use the [Adelaide Metro journey planner](#) to plan my journey.



## Arriving at Adelaide Convention Centre

There are multiple entrances to Adelaide Convention Centre.

It is easiest for me to use the **Main (East) Entrance** to enter the building.





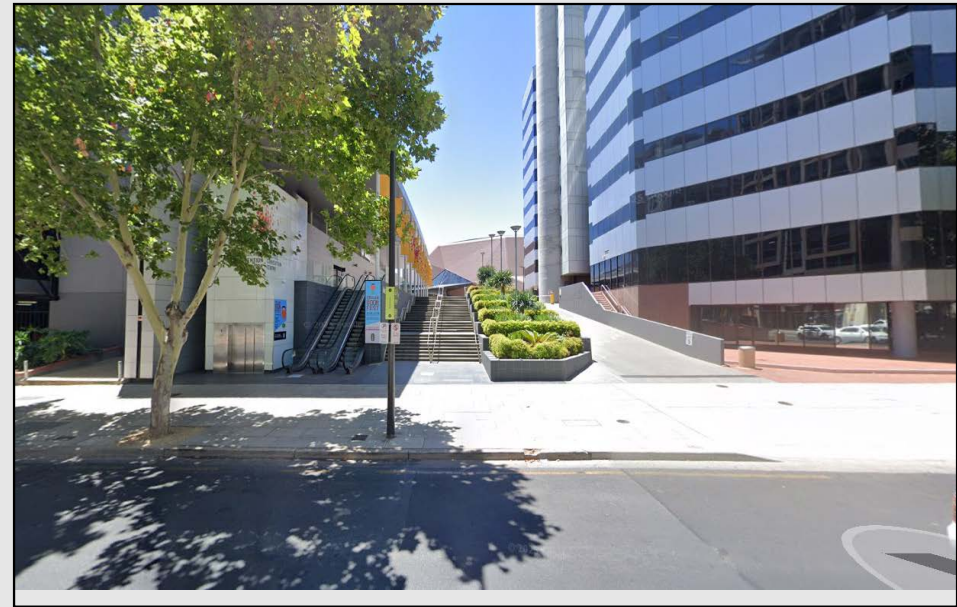
I can make my way to the Main Entrance from North Terrace.

I can take the stairs, escalators or lift up to the Main Entrance.

There is a big open space at the Main Entrance.

I will walk across the big open space towards the big glass doors.

**Stairs to Main Entrance from North Terrace**



**Open space in front of Main Entrance**

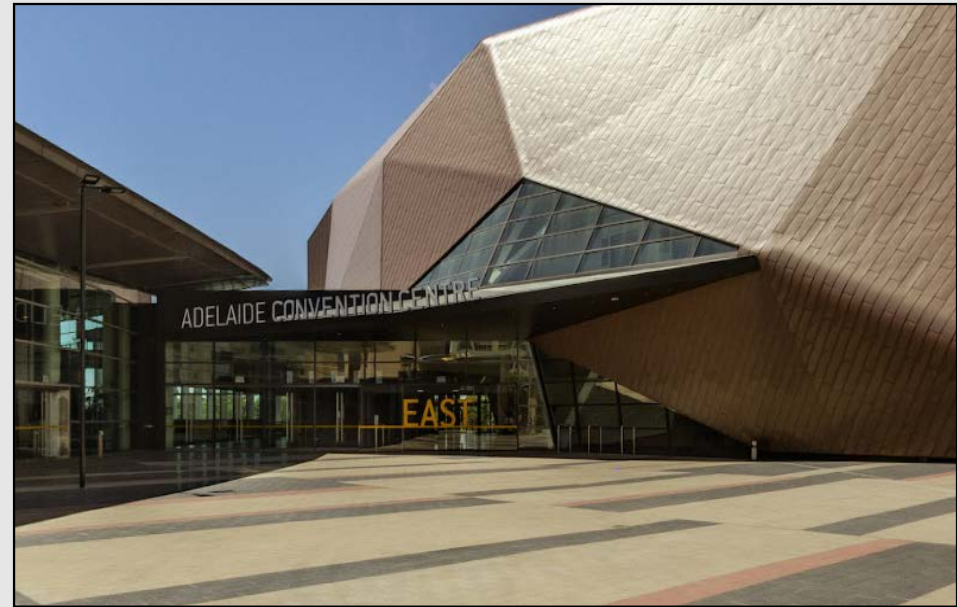


I will enter through the big glass doors with “EAST” written on them in yellow.

When I enter, there will be staff members in uniforms there to greet me. They are friendly, and I can ask them for help.

There will also be signs with the event name, location and directions on screens.

## Main (East) Entrance



## Staff member at entrance

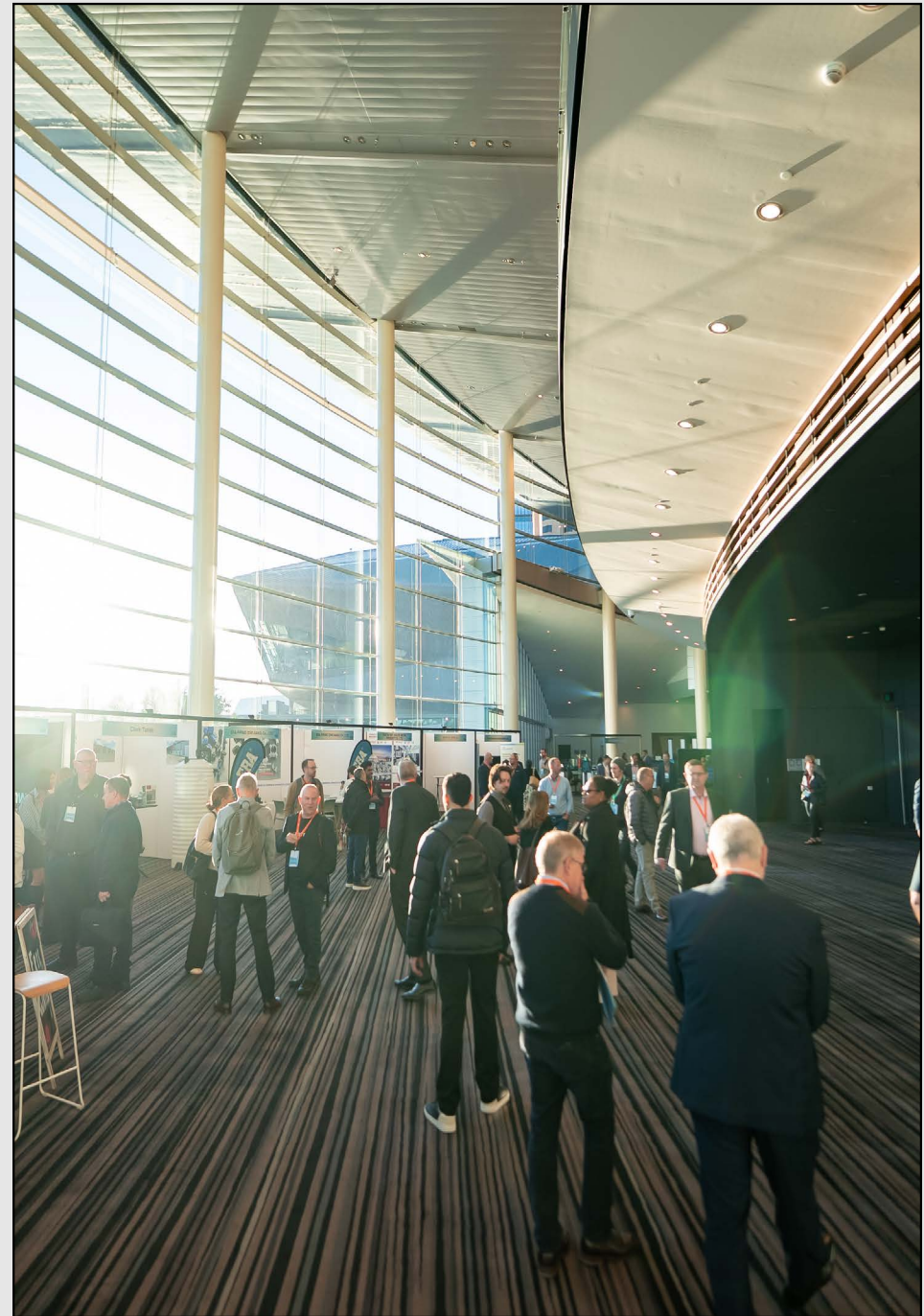




Adelaide Convention Centre is split into three levels: Lower, Ground and Upper.

I can access all these levels using stairs, escalators or the lifts.

Adelaide Convention Centre might be busy, but I can move at my own pace.





I may hear sounds from announcements over the speakers, escalators, or lifts.

If I need a quiet space, I can go into one of the free private meeting pods on the Ground Level.

There is a dedicated accessible meeting pod available to use if I need it.

I can ask a staff member for help finding the meeting pods.

### **Meeting pod**



### **Accessible meeting pod**



If I am unsure where to go or have a question, I can speak to a staff member at the reception desk located near the Main Entrance.



If I have a hidden disability, I can wear a Hidden Disabilities Sunflower.

The staff know what the Hidden Disabilities Sunflower means.

If needed, I can ask for a Hidden Disabilities Sunflower lanyard at the reception.





## Other facilities

There are toilets available on all levels at the Centre, including Accessible Toilets.

Assistance animals are permitted inside Adelaide Convention Centre.

If I need some privacy to change or feed my children, I can use the Parents Rooms.

If the room is locked, I can ask a staff member to unlock it for me.



## Thank you

Thank you for reading our social story.

If you have any feedback or suggestions related to accessibility at Adelaide Convention Centre, please [contact us](#).

